

*see product specification sheet for more compatible XLR-3 gooseneck microphones



www.sennheiser.com/download

Smart Assist



Sennheiser electronic SE & Co. KG
Am Labor 1, 30900 Wedemark, Germany
www.sennheiser.com

Printed in Germany
Publ. 03/24, 587469/A02



Evolution Wireless Digital
EW-DX TS

- Quick Guide
- Kort vejledning
- Kurzanleitung
- Pikaohje
- Guide rapide
- Γρήγορος οδηγός
- Guida rapida
- Kısa Kılavuz
- Guía de inicio rápido
- Краткая инструкция
- Guia rápido
- 快速指南
- Beknopte handleiding
- クイックガイド
- Krótka instrukcja obsługi
- 퀵 가이드
- Snabbguide
-

SENNHEISER

On/Off

TS

Off -> On

short on

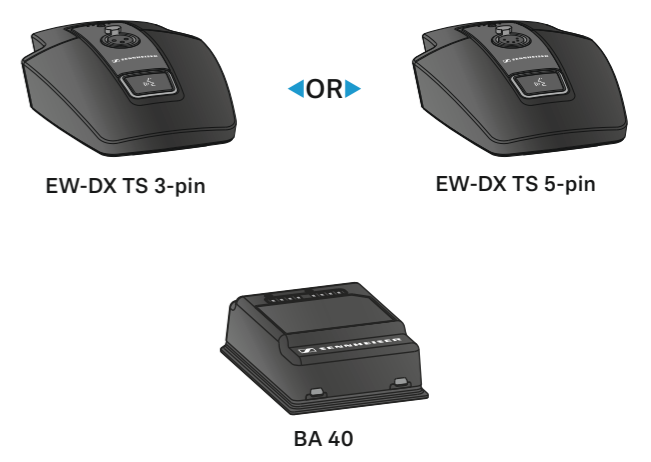
OR

EM 2

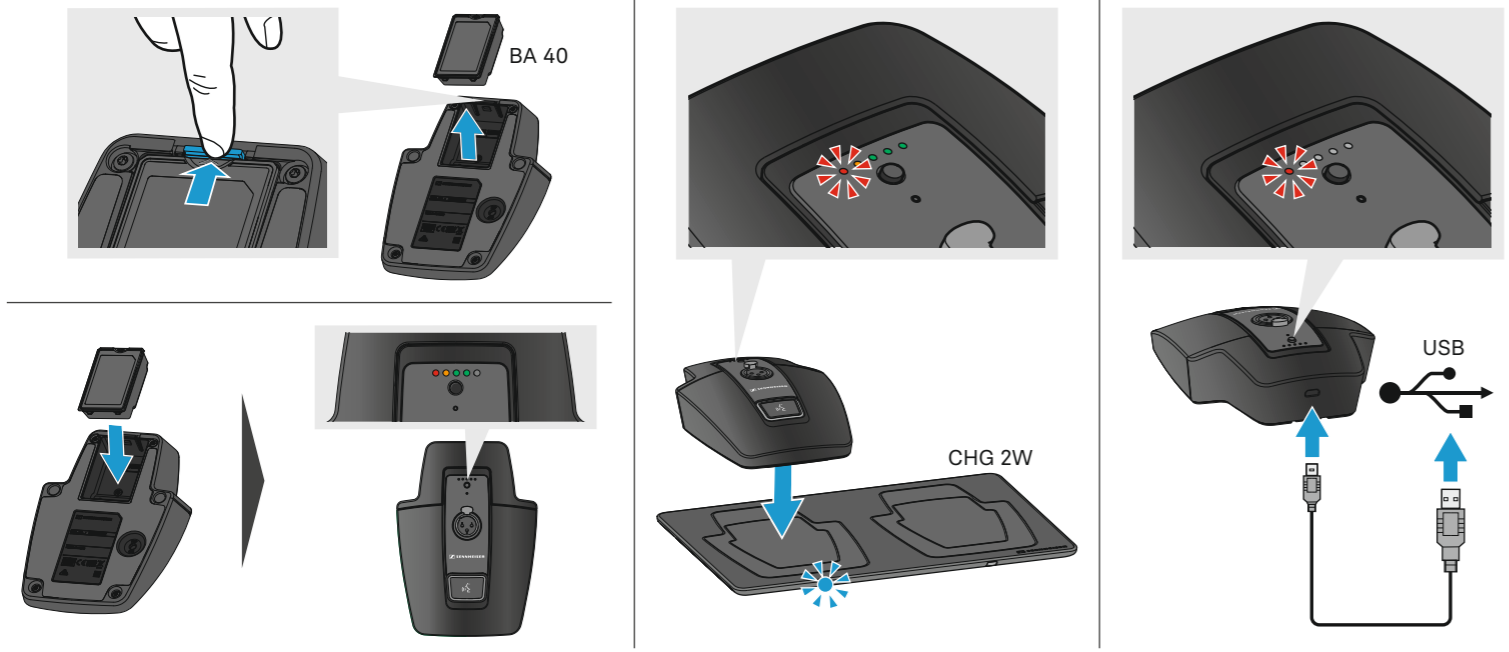
On -> Off

long off

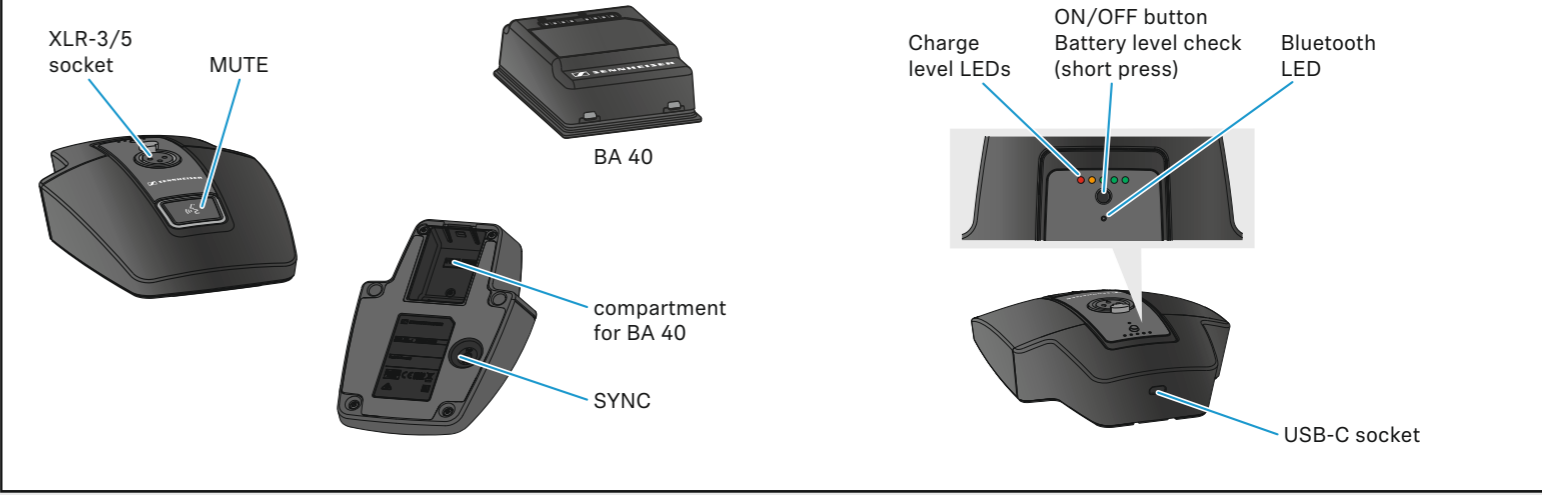
In the box



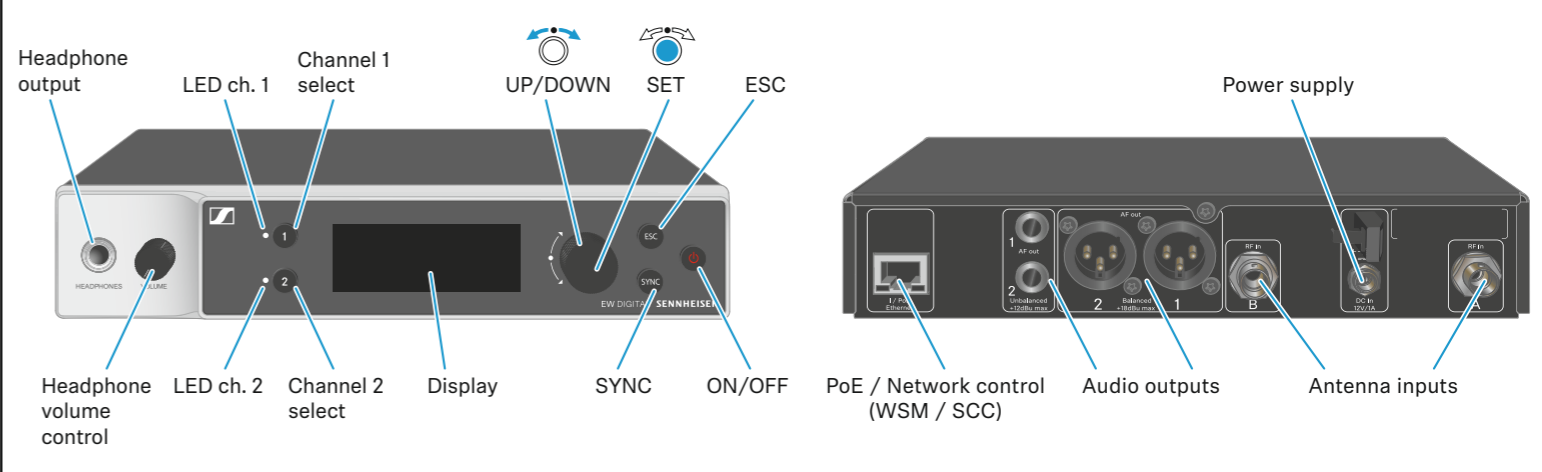
Battery/Charging



EW-DX TS 3/5-pin



EW-DX EM 2



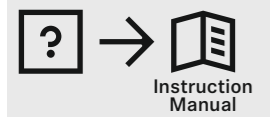
Operating time with BA 40 accupack

	100 %	11:00 h
	80 %	XLR-3
	60 %	XLR-5
	40 %	
	20 %	
	Low Batt	

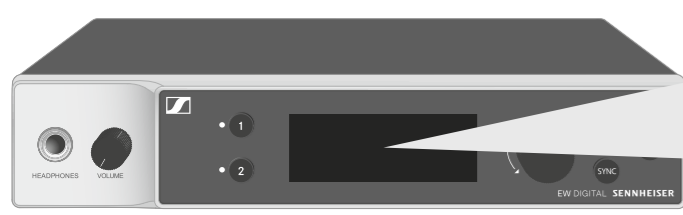
Charging time (until fully charged)

	On	Off
XLR-3	7:00 h	5:00 h
XLR-5	7:30 h	5:30 h
XLR-5	5:30 h	4:30 h

Display



System Home Screen

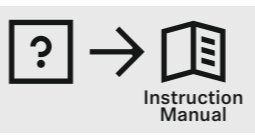
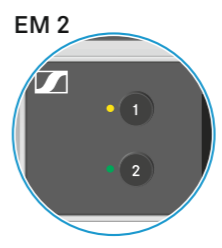


Channel 1 Home Screen

Channel 2 Home Screen

LEDs

LED Ch.1/2	
	- Link ok - audio active
	- Link ok - audio muted or no capsule on SKM
	- Link ok - audio clip
	- No link
	- Link ok - Low transmitter battery
	- No link - Device switched off
	Bluetooth active to - sync with transmitter - connect with app
	Firmware update in progress



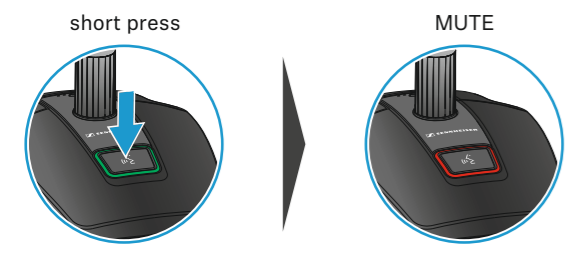
Sync

- select channel & set parameters **2** short press

- press

-

Mute



- select Mute Mode
- set value
 - Disabled
 - AF Mute
 - PTT
 - PTM



www.sennheiser.com/download

Instruction manual | Bedienungsanleitung | Notice d'emploi | Istruzioni per l'uso |
 Instrucciones de manejo | Manual de instruções | Gebruiksaanwijzing |
 Instrukcja obsługi | Bruksanvisning | Betjenings vejledning | Käyttöohje |
 Οδηγίες λειτουργίας | Kullanım kılavuzu | Инструкция по эксплуатации | 使用说明书 |
 取扱説明書 | 사용 설명서 |

Smart Assist

Available on the